

DIGITAL MULTI-MEDIA PRESS

**XANTÉ**

# EN/PRESS®

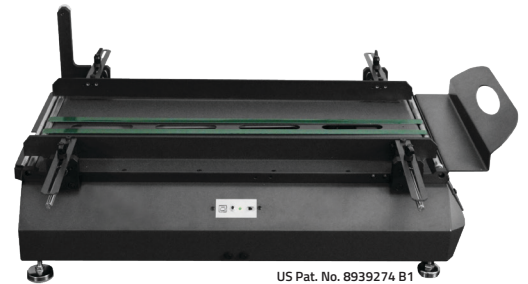


■ **PlateMaker 8**  
INSIDE

Includes  
■ **iQueue**  
Adobe® PostScript® 3™/PDF Workflow  
*Simply Brilliant Color Workflow.*

Adobe® PDF

■ **ENTERPRISE-SP**  
COMPACT HIGH SPEED SYSTEM



# Reliable. Profitable. Production.

The En/Press Digital Multi-Media Press with the patented Enterprise High Speed Feed System offers users an affordable way to go digital and meet the demand for fast, full-color printing. Enterprise's groundbreaking design features a straight feed path for a faster and smoother delivery. The complete digital solution is powered by iQueue Simply Brilliant Adobe Postscript PDF® Workflow that offers Dead-On Spot Color Matching, advanced variable data capabilities, full imposition, intelligent sequential numbering, over a thousand royalty free customer-ready templates and so much more.

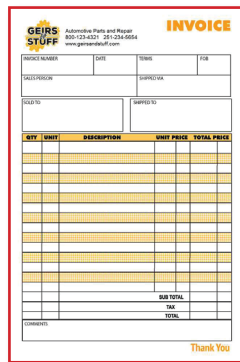
## Improve In-House Productivity

En/Press Digital Multi-Media Print Systems allow you to do more for your customers, in-house

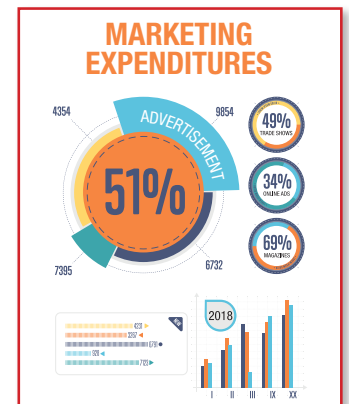
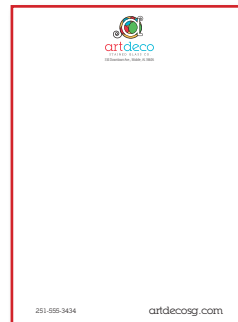
- Print on a wider variety of media and in a wider range of sheet sizes.
- Up to 4,000 full color envelopes per hour
- Features a lower cost per sheet
- Run full color jobs including variable data in one pass.
- iQueue Simply Brilliant Workflow automates prepress production and provides critical color adjustments.



Booklets



NCR Forms



Full color sheets, envelopes and cards



Label stocks

## Astonishing Full-Color Results

The En/Press Digital Series features a multi-bit print engine that delivers production color and print quality your customers demand

- Resolutions up to 4800 for exceptional sharpness, clarity and color quality.
- iQueue can match any spot color that can be created with CMYK **dead-on every time**. Xanté's patented RightON® color matching technology makes spot color matching simpler than ever.
- New HD toner offers a wider color gamut. The smaller particles enable the En/Press Digital Color Series to capture subtle changes in color and tone.
- Output is waterproof and laser safe.

## More Media / Feed Choices

Outstanding media flexibility allows you to offer your customers more and helps eliminate costly outsourcing

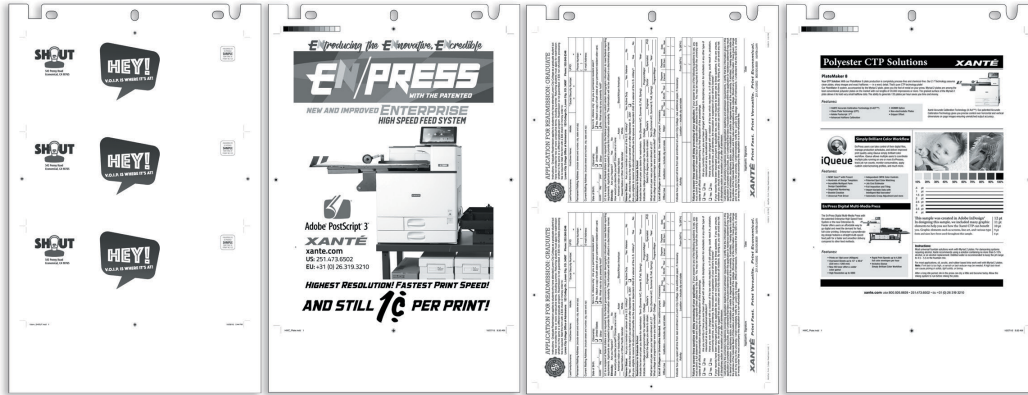
- Prints on a variety of stocks including: Uncoated, coated, NCR, card stocks, textured stocks, label stocks and envelopes (from 3.5" x 3.5" up to 13" x 49").
- Prints on 18pt cover (400gsm).
- Print oversized sheets / banners up to 13" (330 mm) x 49.6" (1260 mm).



# Computer-to-Plate PlateMaker 8

INSIDE

Xanté is pleased to announce a revolutionary advancement in Computer-to-plate (CTP) printing technology. The En/Press Revolutionary Digital Multi-Media Press with PlateMaker 8 inside is a brand new polyester CTP system. Specifically designed for small commercial printers, this solution is low cost, high quality, chemical free, and fast. The best part is that it's all contained WITHIN the En/Press which is already the best way to print your envelopes, NCR forms, stationery, invitations, announcements and more!



## PlateMaker 8 Specifications

Myriad 2 Plates	Available in the following sizes: 10" x 15" - 13" x 19 <sup>7</sup> / <sub>8</sub> "
340mm Option	13 <sup>3</sup> / <sub>8</sub> " x 19 <sup>7</sup> / <sub>8</sub> " (340mm x 505mm)
Plate Thickness	4 mil plates

## Customize with the Feeder System that works for your needs. (Enterprise-SP or the complete Enterprise Feed System)



- **THE BEST envelope feed system IN THE WORLD**
- Load up to 1,000 #10 envelopes and walk away
- Quick adjust guides for faster media changes

### Available in *five* configurations:

1. Standalone
2. Standalone with the Compact Enterprise-SP Feeder (500 #10 envelopes)
3. Digital Production Press with the Enterprise (1,000 #10 envelopes)
4. Additional Trays (2 Extra trays for up to 12.5"x18")
5. High Capacity (Hi-Cap Tray for Letter or A4)



- **NEW COMPACT DESIGN**  
33" x 11.5" x 20"
- Load up to 500 #10 Envelopes
- Media from 3.5" x 3.5" up to 13" x 49"
- Load media on-the-go



# EN/PRESS



## ENGINE SPECIFICATIONS

<b>Configuration</b>	Desktop
<b>Technology</b>	Laser-beam scanning & electrophotographic printing with dual component toner development, 4-drum tandem method, output water proof and laser safe Color 60 ppm / Black & White 60 ppm / 75 #10s ppm 60, 26 and 17 ppm for letter/A4 depending on media thickness Envelopes less than 8.5" in width 25 ppm
<b>Warm-Up Time</b>	22 seconds or less
<b>First Print Speed</b>	8 seconds or less
<b>Duplex Print Speed</b>	Near 100% productivity for all paper sizes
<b>Print Resolution</b>	600, 1200, 2400 or 4800
<b>Input Capacity</b>	Standard: 2 x 550 sheets + 100-Sheet Bypass Tray
<b>Output Capacity</b>	Standard: 500 sheets face down
<b>Paper Sizes</b>	
Feed Tray 1:	Letter / A4
Feed Tray 2:	Min: 7.17" W x 5.83" L (182 x 148 mm) Max: SRA3* 12" W x 18" L (304 x 457 mm)
Multi-Purpose Tray:	Min: 3.5" W x 3.5" L (89 x 89 mm) Max: 13" W x 49.6" L (330 x 1260 mm)*
High Capacity Tray:	8.5" W x 11" L (216 x 279 mm)
Dual Tray:	Min: 7.17" W x 5.83" L (182 x 148 mm) Max: SRA3* 12" W x 18" L (304 x 457 mm)
<b>Paper Weights</b>	
First / Second Tray:	16 - 68 lb. Bond - 14pt Cover (60 - 320 gsm)
Bypass Tray:	16 - 68 lb. Bond - 18pt Cover (60 - 400 gsm) Feed source for Labels, OHP and Envelopes
Duplex Unit:	60 - 256 gsm
<b>Paper Types</b>	Bond, Plain, Recycled, Preprinted, Special, Color, Letterhead, Card Stock, Glossy, Coated, Labels, OHPs and Envelopes (4 Bar, Monarch, #10, window* and larger)
<b>Auto Duplex</b>	Standard
<b>Dimensions</b> (Base Model)	23.2" W x 27" D x 28.6" H (587 x 685 x 725 mm) (Standard Configuration)
<b>Weight</b> (Base Model)	With consumables loaded (except toner) 187 lb. (85 kg)
<b>Power</b>	120-127V / 220-240V (50/60 Hz)
Operating Power	992W Consumption
Maximum Power	1.854 kw or less
Energy Saver	2.2W

### PRINTER CONTROLLER (Standard)

<b>CPU</b>	Intel Atom Processor Bay Trail 1.75GHz
<b>Memory</b>	2 GB
<b>Hard Disk Drive</b>	320 GB HDD Standard on all models
<b>Printer Languages</b>	PCL 5c, PCL 6, RPCS, Adobe® PS® 3™, PDF Direct Print
<b>Fonts</b>	Standard: 45 PCL fonts, 13 Intl Fonts, 136 PS 3 fonts Optional: OCR and Barcode fonts available
<b>Standard Interface</b>	Ethernet (1000Base-T/100Base-TX/10Base-T), USB 2.0, SD Slot
<b>Operating Systems</b>	Windows 7 to current / Mac OS 10.7 to current

## SYSTEM SPECIFICATIONS

### ENTERPRISE HIGH SPEED FEEDER

Capacity	Load up to 1,000 #10 (241 x 105mm) Envelopes
Media Sizes	3.5" x 3.5" (89 x 89 mm) - 13" x 49.6" (330 x 1260 mm)
Paper Weights	16 - 68 lb. Bond - 18pt Cover (60 - 400 gsm)

### ENTERPRISE-SP COMPACT HIGH SPEED FEEDER

Dimensions	33" x 11.5" x 20" (84cm x 29cm x 51cm)
Capacity	Load up to 500 #10 (241 x 105mm) Envelopes
Paper Sizes	3.5" x 3.5" (89 x 89 mm) - 13" x 25.5" (330 x 648 mm)
Paper Weights	16 - 68 lb. Bond - 18pt Cover (60 - 400 gsm)

## SUPPLIES

Consumables	Yield (ISO 19,798 Yields)	Consumables	Yield
Black Toner	43,000 pages	Yellow Toner	34,000 pages
Mag. Toner	34,000 pages	Cyan Toner	34,000 pages
Fuser	160,000 pages*	Imaging Drums	120,000 pages*
Image Transfer Belt	200,000 pages*		

### Part Numbers

Cyan Toner	200-100373	Black Drum	200-100380
Magenta Toner	200-100374	CMY Drum Set	200-100381
Yellow Toner	200-100375		
Black Toner	200-100376		

110V Fusing Unit	200-100383	Transfer Belt	200-100382
220V Fusing Unit	200-100384	Waste Toner Bottle	200-100387

En/Press ships with starter toner cartridges that yield 21,500 pages for Black and 17,000 pages for each color. \*based on letter/A4 size pages at 5% coverage. Use only Xanté or Xanté approved consumables.



### iQueue Simply Brilliant Workflow (Included)

Digital Color Workflow with Advanced Color Matching and File Management Tools

#### Available Features:

- Job Sharing via Shared Folders
- Over a Thousand Design Templates
- Multi-Part Form Design
- Sequential Numbering
- Booklet Creation
- Universal Print Driver
- Independent CMYK

#### Color Controls

- Patented Spot Color Matching
- Job Cost Estimator
- Full Imposition and Tiling
- Custom Barcode Generator
- Import Variable Data with Intelligent Mail barcodes\*
- Automatic Creep Adjustment and more



xante.com  
251.473.6502



Adobe® PostScript® 3™

©2024 Xanté Corporation. All rights reserved. Xanté, HWC, iQueue, and Right-On are trademarks or registered trademarks of Xanté Corporation. Adobe, Adobe PDF, and PostScript 3 are registered trademarks of Adobe Systems, Incorporated. All other trademarks or registered trademarks are the property of their respective owners. The Specifications listed here are subject to change without notice.

\*Paper size only. \*\*Laser safe window envelopes only. Patent pending technology. \*Call for details.